

Operation manual for PERROT pop up sprinkler without valve

Type : LVZX 30
LVZA 22
LVZE 22
LVZR 22



1. Introduction

This operation manual shows on what you should pay attention during installation, operation and maintenance of pop-up sprinklers. Regarding maintenance and operating pop-up sprinkler systems require less efforts. Nevertheless there are some details you should pay attention to, so that the installation fulfils its functions and works to your complete satisfaction during a long period.

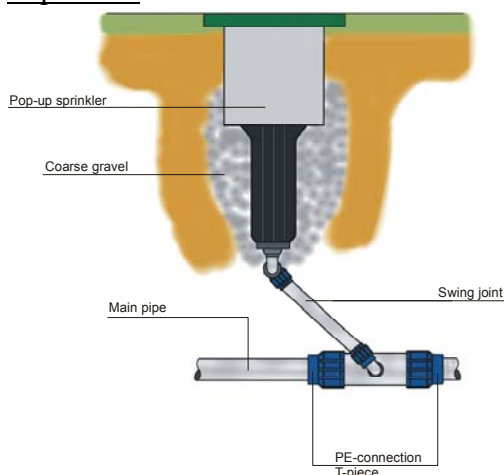
2. Installation

Dimensions:

Type of sprinkler:	LVZX 30	LVZA 22	LVZA 22 H	LVZE 22	LVZR 22
Connection to supply pipe	G ¾	G ¾	G 1	G 1	G 1½
Installation height	210 mm	230 mm	320 mm	320 mm	450 mm
Swing joint	G ¾	G ¾	G 1	G 1	G 1½

2.1 Installation

- When installation to the public water supply system, you must pay attention to the regulations of the water utility respectively guideline of the DVGW (Deutscher Verein der Gas- und Wasserfachmänner e.V.).
- On stony ground, pipes are to be laid in a sand bed. The sand bed should surround the pipe everywhere 10 cm.
- It is necessary that the installation of the pop-up sprinkler is in the same level as the ground..
- Under each sprinkler there must be, a gravel packing of 3 – 10 buckets of gravel, grading approximately 32. A perfect drainage of the sprinkler housing is very important.



- **Flush the pipes proper before installation of the sprinklers**

3. Commissioning

Pipes must always be filled slowly, that means you must open the gate valve gradual, under observance of the assigned operating pressure. Despite of a thoroughly flushing it may happen that the sprinkler nozzle is blocked. To clean the nozzle you must turn off the nozzle and flush the sprinkler. To unscrew the nozzle you must put a block under the lid or take off the cover. (Use socket spanner)

4. Adjustments

4.1 Sectors

- The sectors of the reference part circle of sprinklers are adjusted by pushing the spring stop at the end, which expand the spring. You achieve a crude adjustment before installation, the fine adjustment should be done on the working sprinkler.

4.2 Casting range

- The casting range is regulated through the application of different nozzles and pressures. (Further information see catalogue)

4.3 Jet deflector screw (type LVZR 22 no adjustment available)

- The jet deflector screw is for adjustment of the near irrigation around the sprinkler. If you screw in further the screw in the water jet, the „rainfall“ consistency around the sprinkler increases, the casting range decreases. If you unscrew the interruption screw the irrigation around the sprinkler decreases and the casting range increases.

5. Maintenance / Cleaning / Repair

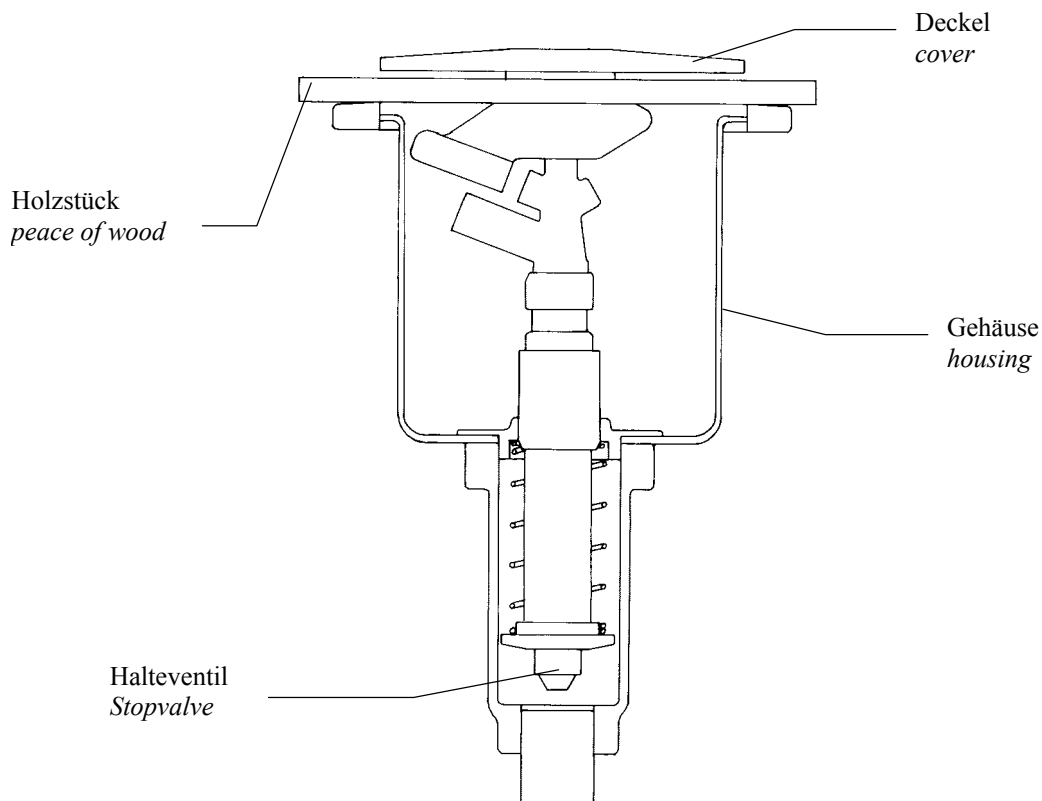
- ☆ To clean or suction the housing you must lift the sprinkler by hand or remove the cover from time to time.
- ☆ Examine function of gravel package
- ☆ In case that the sprinkler insert or nozzle head is dirty, only clean it with water. Do not use lubricants or grease, other wise the gliding plate in the sprinkler might be damaged!!!
- ☆ Please dismount defect parts immediately and repair them or send them to repair.

6. Preparation for winter time

Before winter the pipe system and the pumping station are to be drained. The drainage valve must be open until the next in commissioning.

By sprinklers with a stop valve (H), the water above the stop valve cannot discharge itself. Because of that reason the sprinkler insert of the installation are to be lift on the cover (e.g. for winterising). When the sprinkler insert are lift, the water can flows out off the guiding housing and air can enter into the conductions.

Therefore it is the best to put a piece of wood with approximately 2 cm between cover and housing until the installation is empty.



7. Troubleshooting + Solutions

☆



Attention !!!

Before above-mentioned works are executed, it must be ensure that the valve is pressure-less.

☆

In case of less casting range of some sprinklers it might be garbage in the filter. Then you must dismount the sprinkler insert and clean the filter.

☆

Flushing the pipe

Only with flushing insert, otherwise the water which flows back can take garbage with it in the housing and can then enter to the pipe system.

8. Disassembly and assembly of sprinklers

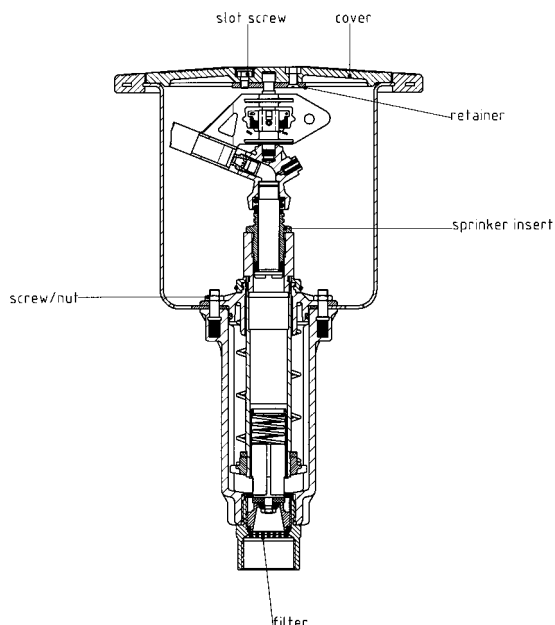
That work can be done with help of standard tools.

Disassembly

- ☆ Unscrew slot screws in the cover.
- ☆ Remove screw / nut and pull out sprinkler insert

Assembly

- ☆ Tighten sprinkler insert with screw / nut
- ☆ Mount cover with screws and retainer for cover



Subject to change without prior notice.